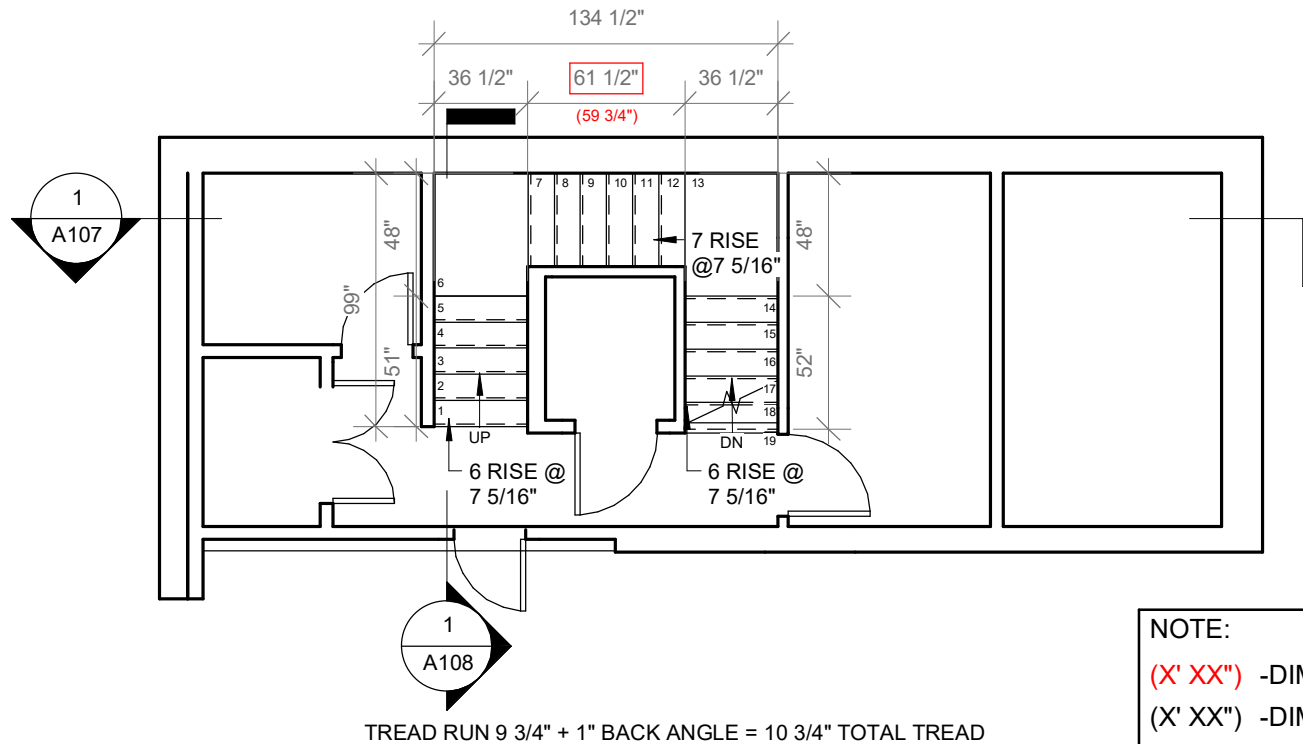


## REVISED STAIR DETAIL BASEMENT TO GROUND FLOOR



### NOTE:

(X' XX") -DIMENSION AS PER SKETCH  
 (X' XX") -DIMENSION AS PER MODEL  
 [PLEASE CONFIRM]

## Basement

1 : 75

### R & A STAIRS

1245 Maple Hill Court, Unit 6  
 Newmarket, Ontario L3Y 9E8  
 (905) 764-0435

### MADISON TOWNHOUSES

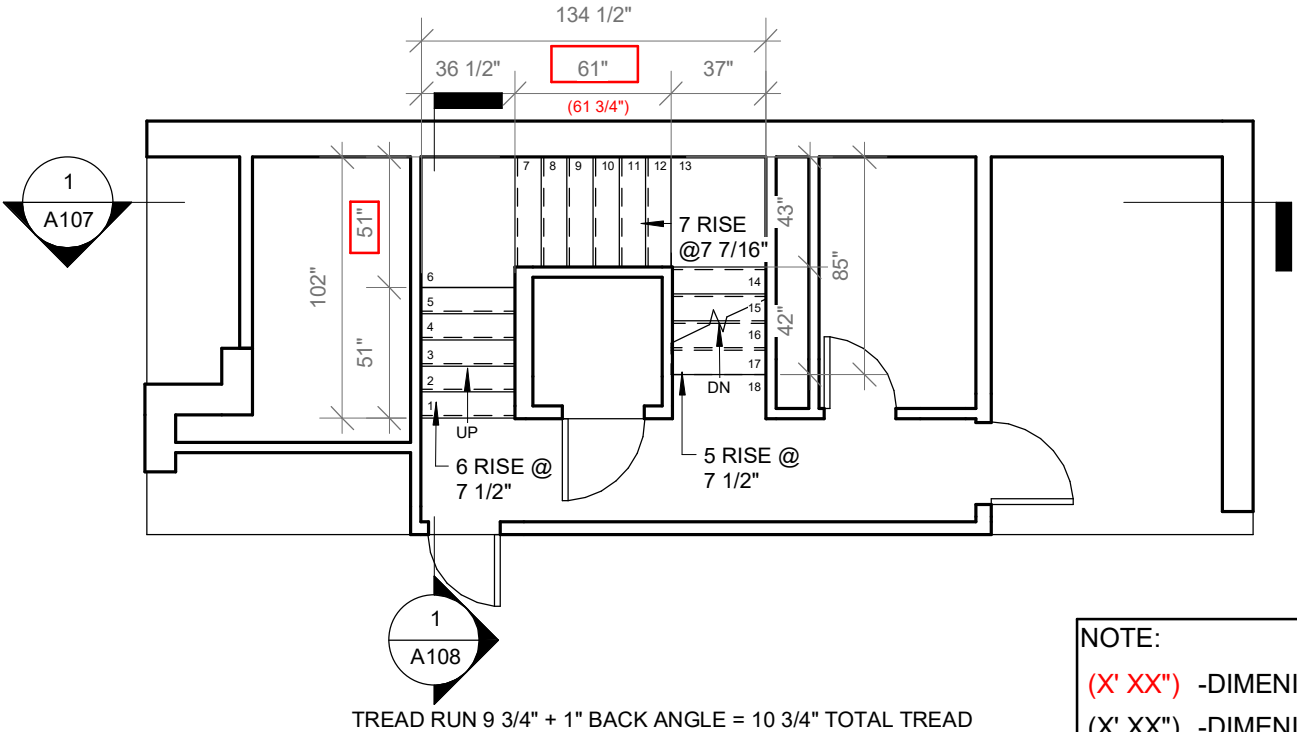
383 MADISON AVE.  
 TORONTO, ON.

### STAIR DETAILS V.2 - OPTION A

BASEMENT TO FIRST FLOOR

31 May 2019

REVISED STAIR DETAIL GROUND TO SECOND FLOOR



NOTE:  
(X' XX") -DIMENISON AS PER SKETCH  
(X' XX") -DIMENISON AS PER MODEL  
[PLEASE CONFIRM]

1 Ground  
1 : 75

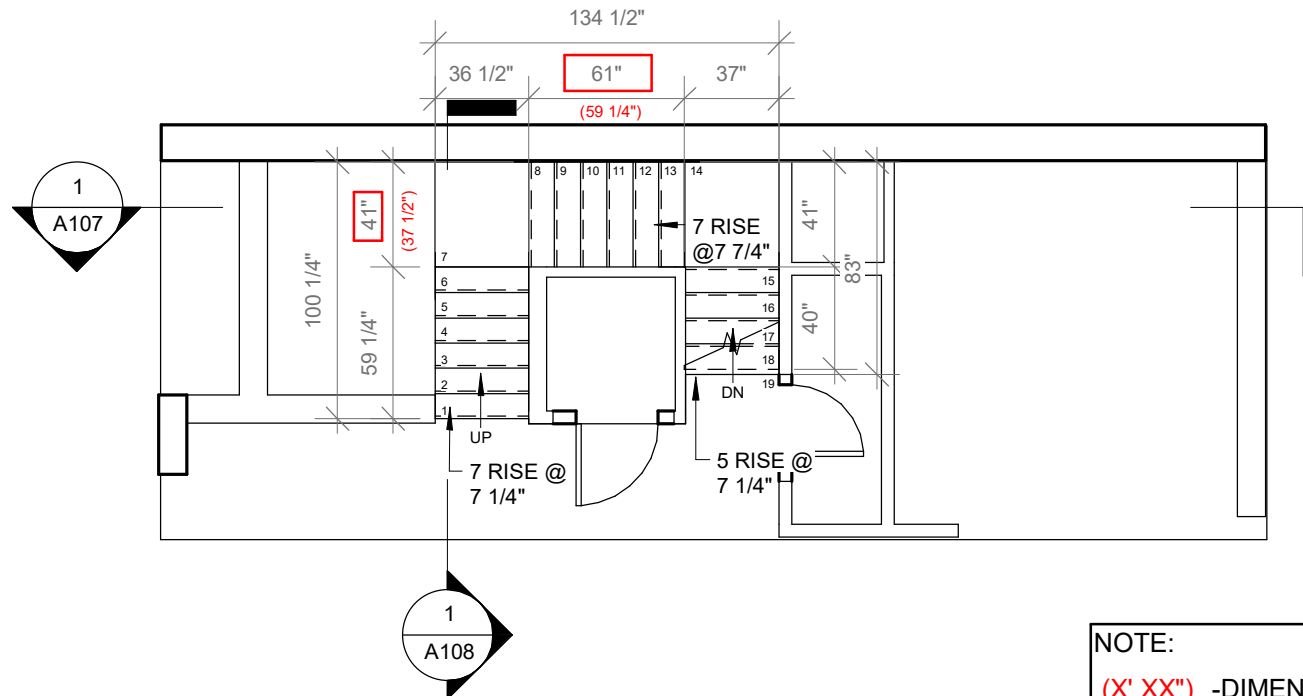
R & A  
STAIRS

1245 Maple Hill Court, Unit 6  
Newmarket, Ontario L3Y 9E8  
(905) 764-0435

MADISION TOWNHOUSES  
383 MADISION AVE.  
TORONTO, ON.

STAIR DETAILS V.2 - OPTION A  
GROUND TO SECOND FLOOR  
31 May 2019

## REVISED STAIR DETAIL SECOND FLOOR TO THIRD FLOOR



### NOTE:

(X' XX") -DIMENISON AS PER SKETCH  
 (X' XX") -DIMENISON AS PER MODEL  
 [PLEASE CONFIRM]

1

## Second Floor

1 : 75

### R & A STAIRS

1245 Maple Hill Court, Unit 6  
 Newmarket, Ontario L3Y 9E8  
 (905) 764-0435

### MADISION TOWNHOUSES

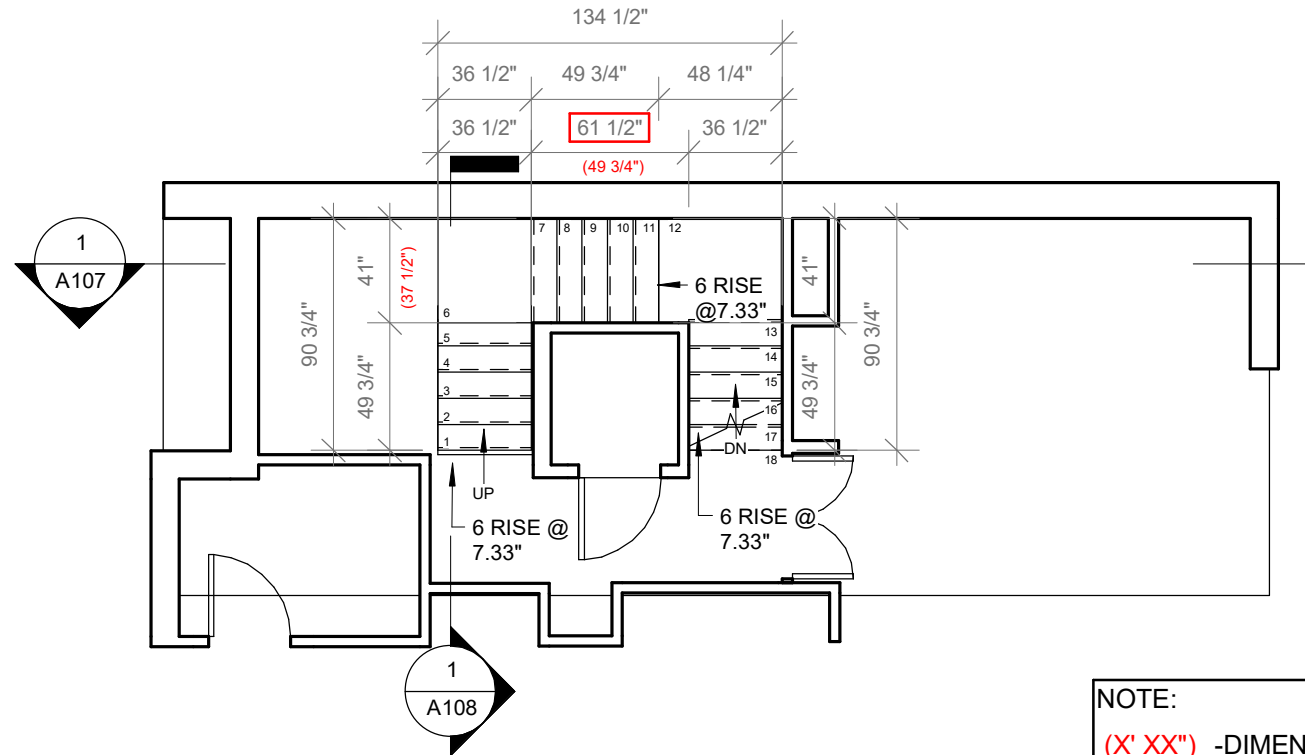
383 MADISION AVE.  
 TORONTO, ON.

### STAIR DETAILS V.2 - OPTION A

SECOND TO THIRD FLOOR

31 May 2019

## REVISED STAIR DETAIL THIRD FLOOR TO ROOF DECK



### NOTE:

(X' XX") -DIMENISON AS PER SKETCH  
(X' XX") -DIMENISON AS PER MODEL  
[PLEASE CONFIRM]

1

## Third Floor

1 : 75

### R & A STAIRS

1245 Maple Hill Court, Unit 6  
Newmarket, Ontario L3Y 9E8  
(905) 764-0435

MADISION TOWNHOUSES

383 MADISION AVE.  
TORONTO, ON.

STAIR DETAILS V.2 - OPTION A

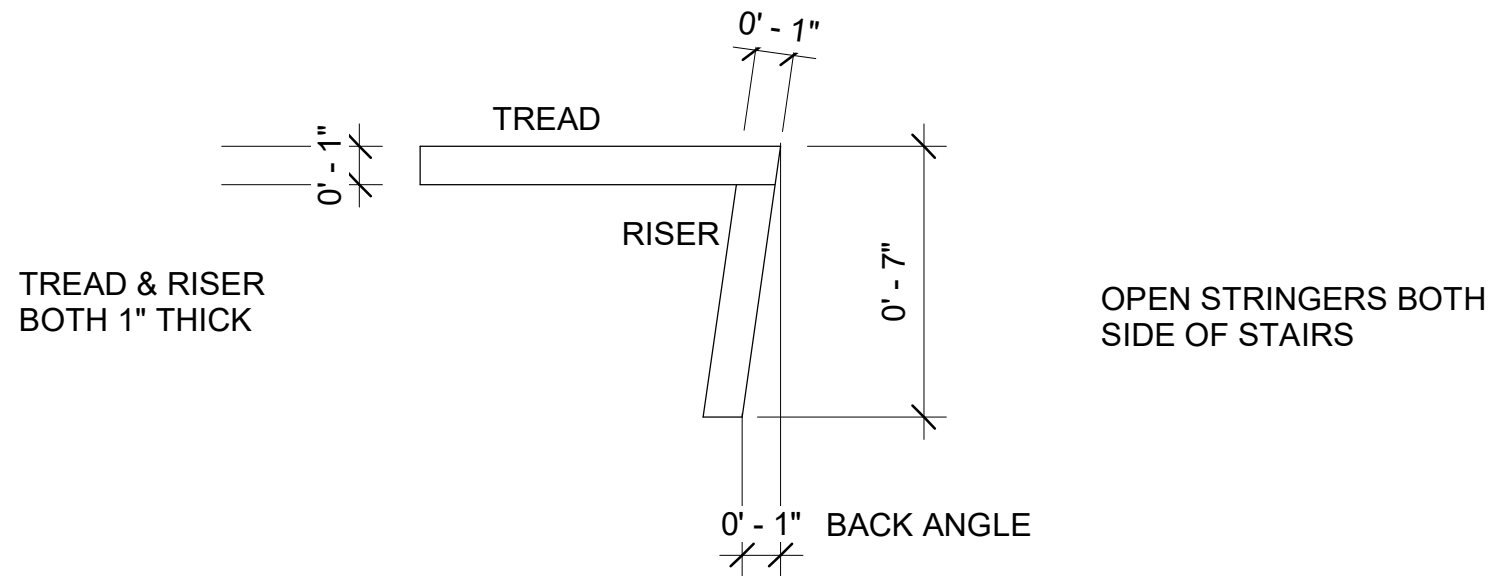
THIRD FLOOR TO ROOF DECK

31 May 2019

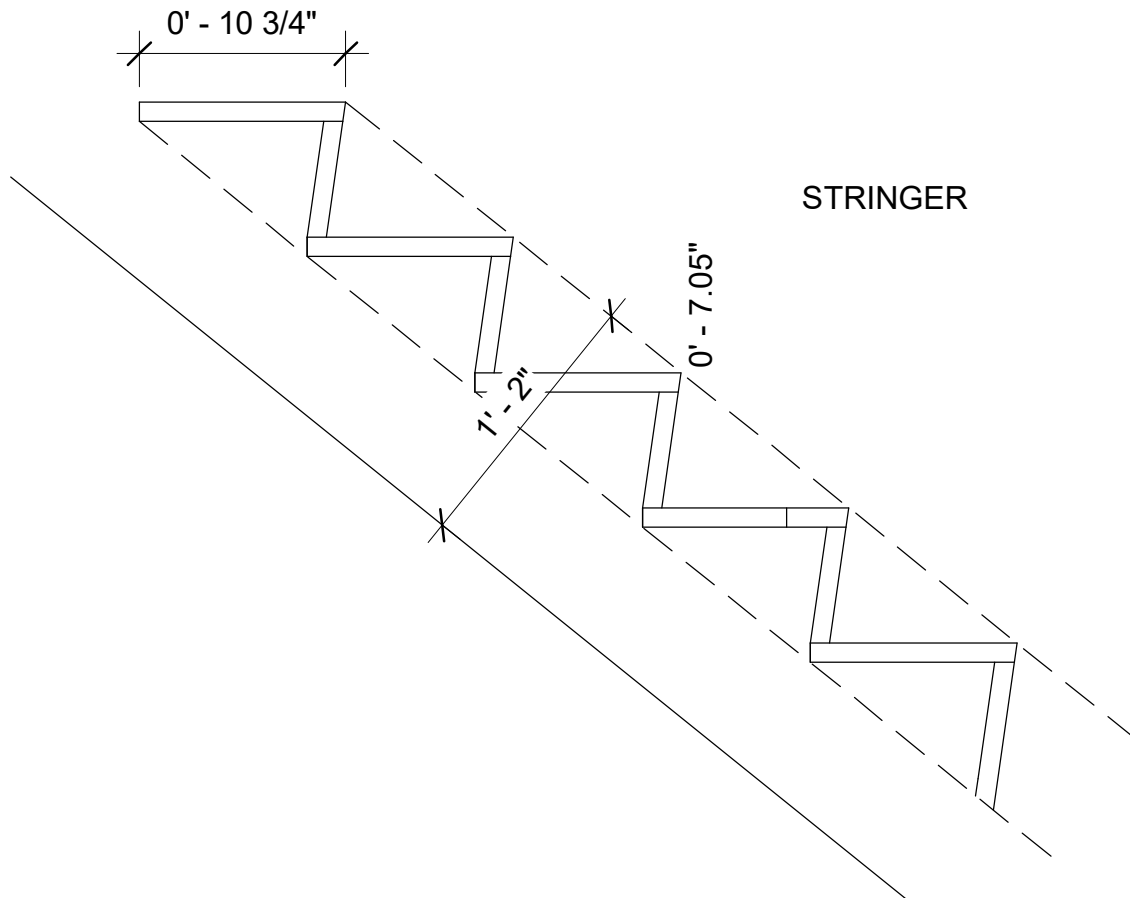
R & A  
STAIRS

383 MADISION AVE.  
TORONTO, ON.

31 May 2019

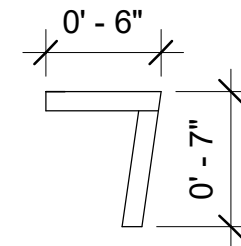


# CROSS SECTION



BOTH STRINGER 1 3/4" x 14"  
CONCEALED WALL STRINGER

INSIDE STRINGER SAME SIZE  
DETAIL WITH THE INSIDE RUN  
DETAIL AS NOTED ON DRAWING



## R & A STAIRS

1245 Maple Hill Court, Unit 6  
Newmarket, Ontario L3Y 9E8  
(905) 764-0435

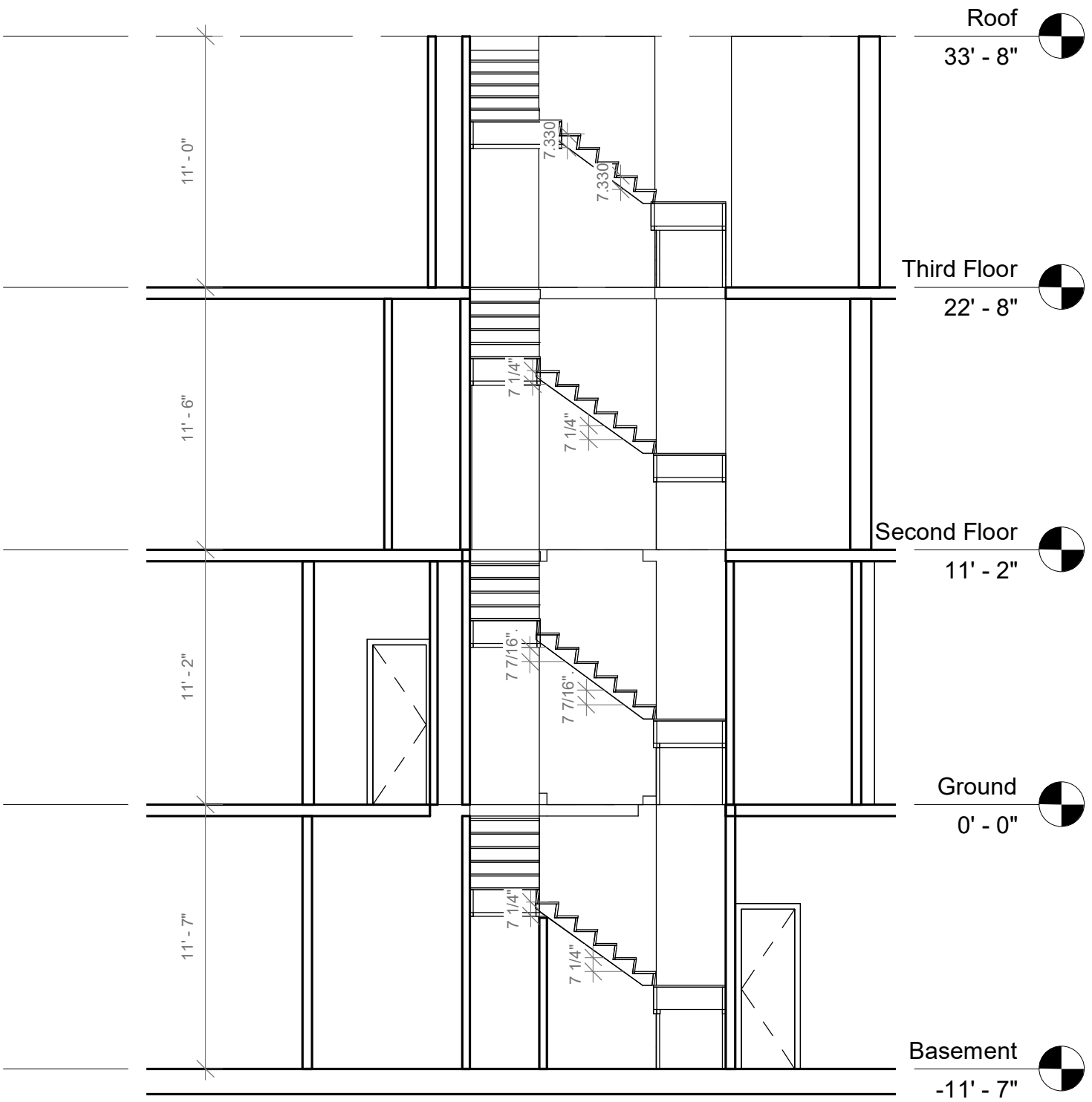
MADISION TOWNHOUSES

383 MADISION AVE.  
TORONTO, ON.

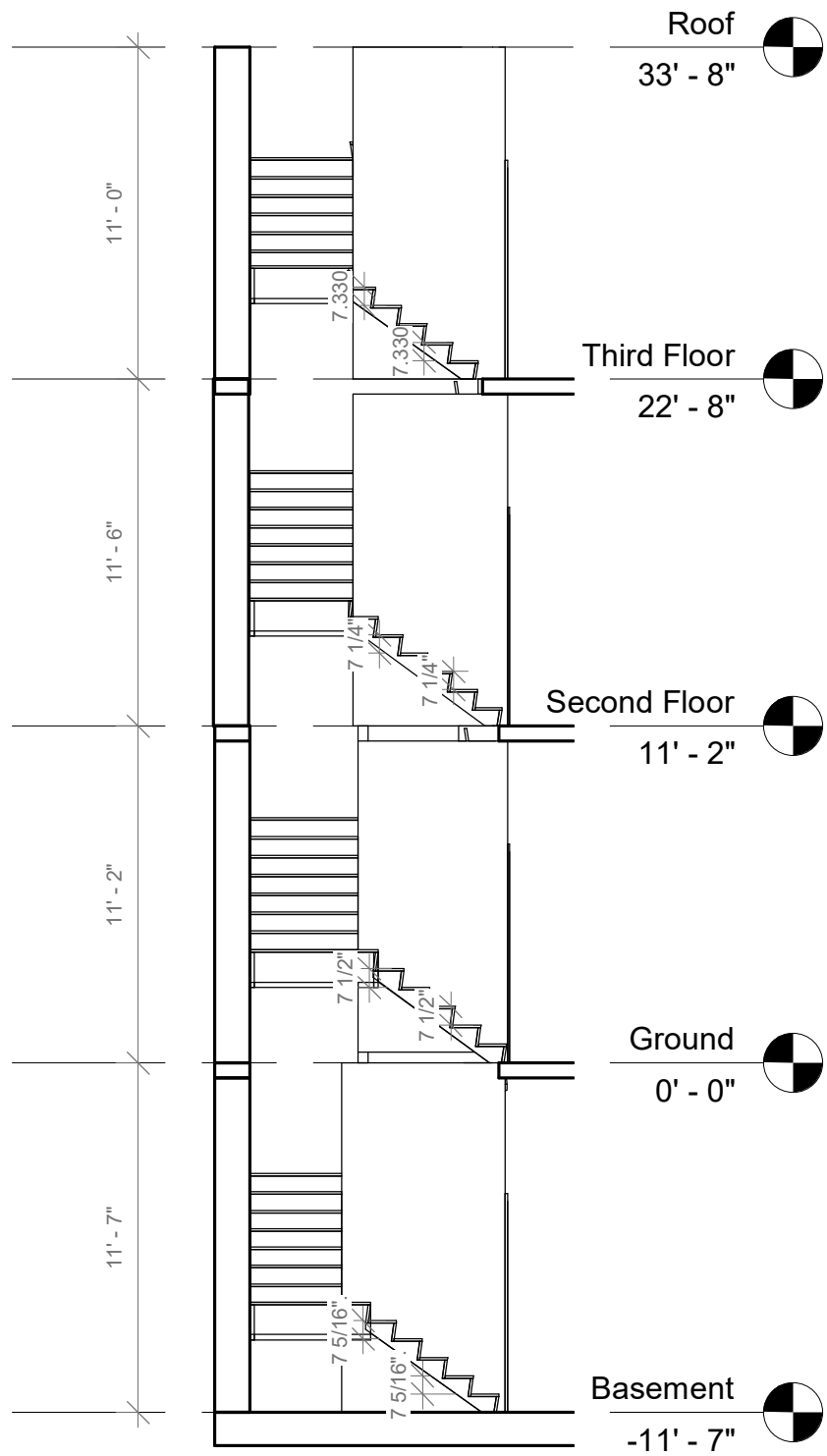
STAIR DETAILS V.2 - OPTION A

CROSS SECTION

31 May 2019



**1** Section 3  
1 : 75



1

# Section 4

1 : 75

## R & A STAIRS

1245 Maple Hill Court, Unit 6  
Newmarket, Ontario L3Y 9E8  
(905) 764-0435

MADISION TOWN HOUSES  
383 MADISION AVE.  
TORONTO, ON.

STAIR DETAILS V.2 - OPTION A  
SECTION 2  
31 May 2019